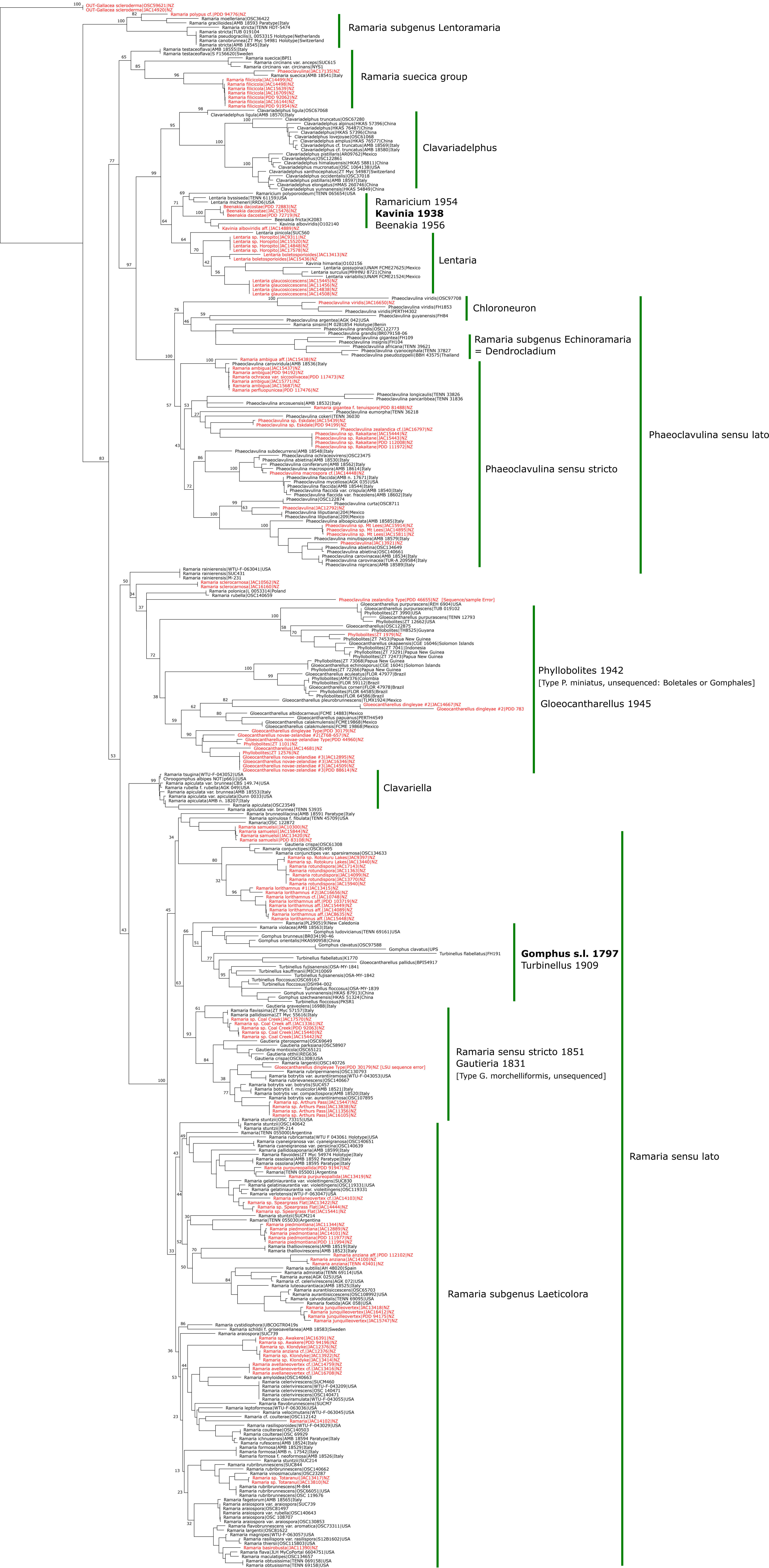


# Gomphales Phylogeny

ITS(249) + LSU(246) + ATP6(86) + mtSSU(44) + RPB2(22) + Tef(19)  
Mafft INSI-i + removal of poorly aligned regions  
IQ-Tree v2, partitioned, modelled, 1000 ultrafast bootstraps

Jerry Cooper Jul. 2023



Ramaria subgenus Lentoramaria

Ramaria suecica group

Clavariadelphus

Ramaricium 1954  
Kavinia 1938  
Beenakia 1956

Lentaria

Chloroneuron

Ramaria subgenus Echinoramaria  
= Dendrocladium

Paeooclavulina sensu lato

Paeooclavulina sensu stricto

Phyllobolites 1942  
[Type P. miniatus, unsequenced: Boletales or Gomphales]

Gloeocantharellus 1945

Clavariella

Gomphus s.l. 1797  
Turbinellus 1909

Ramaria sensu stricto 1851  
Gautieria 1831  
[Type G. morchelliformis, unsequenced]

Ramaria sensu lato

Ramaria subgenus Laeticolora