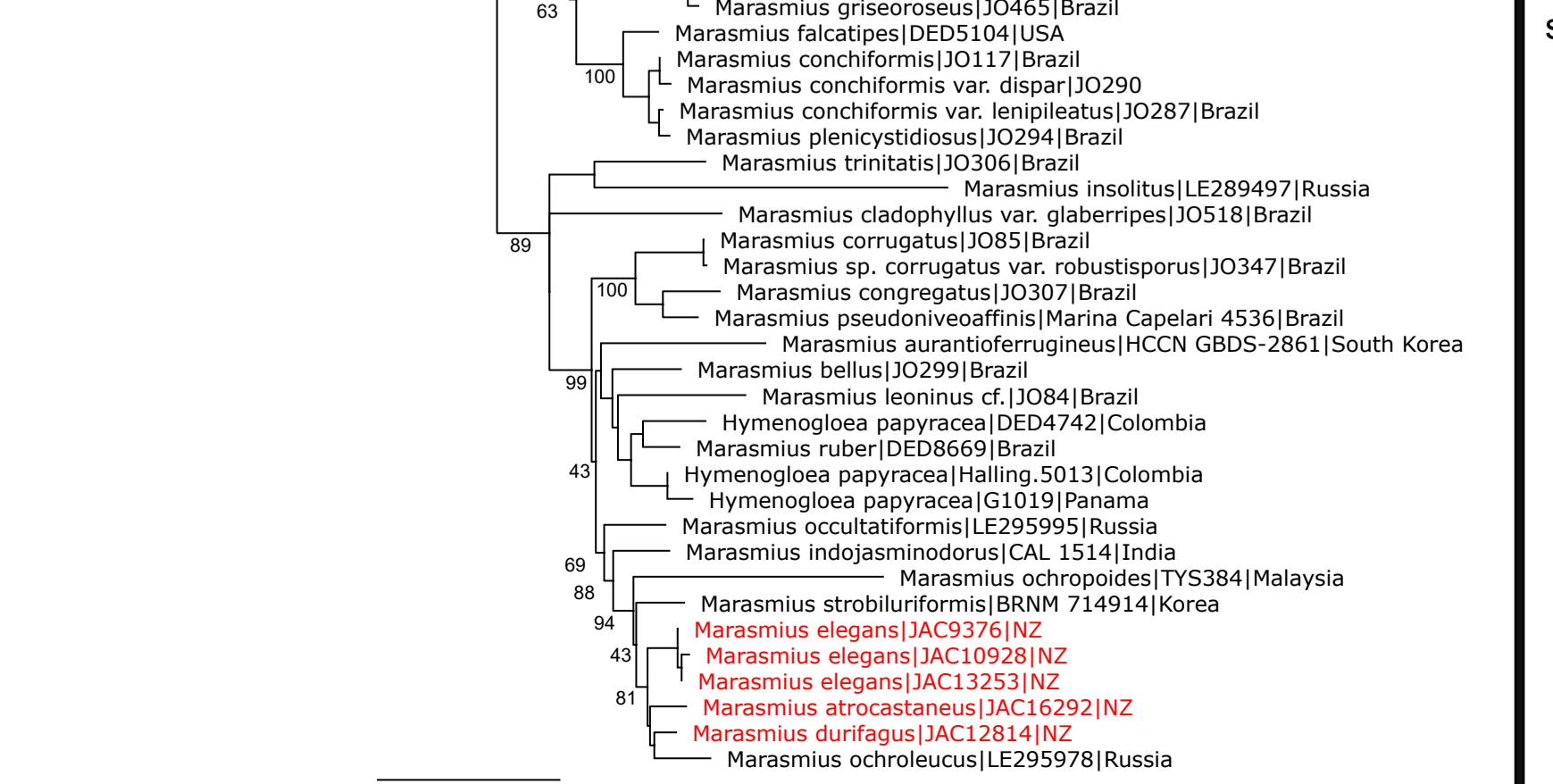
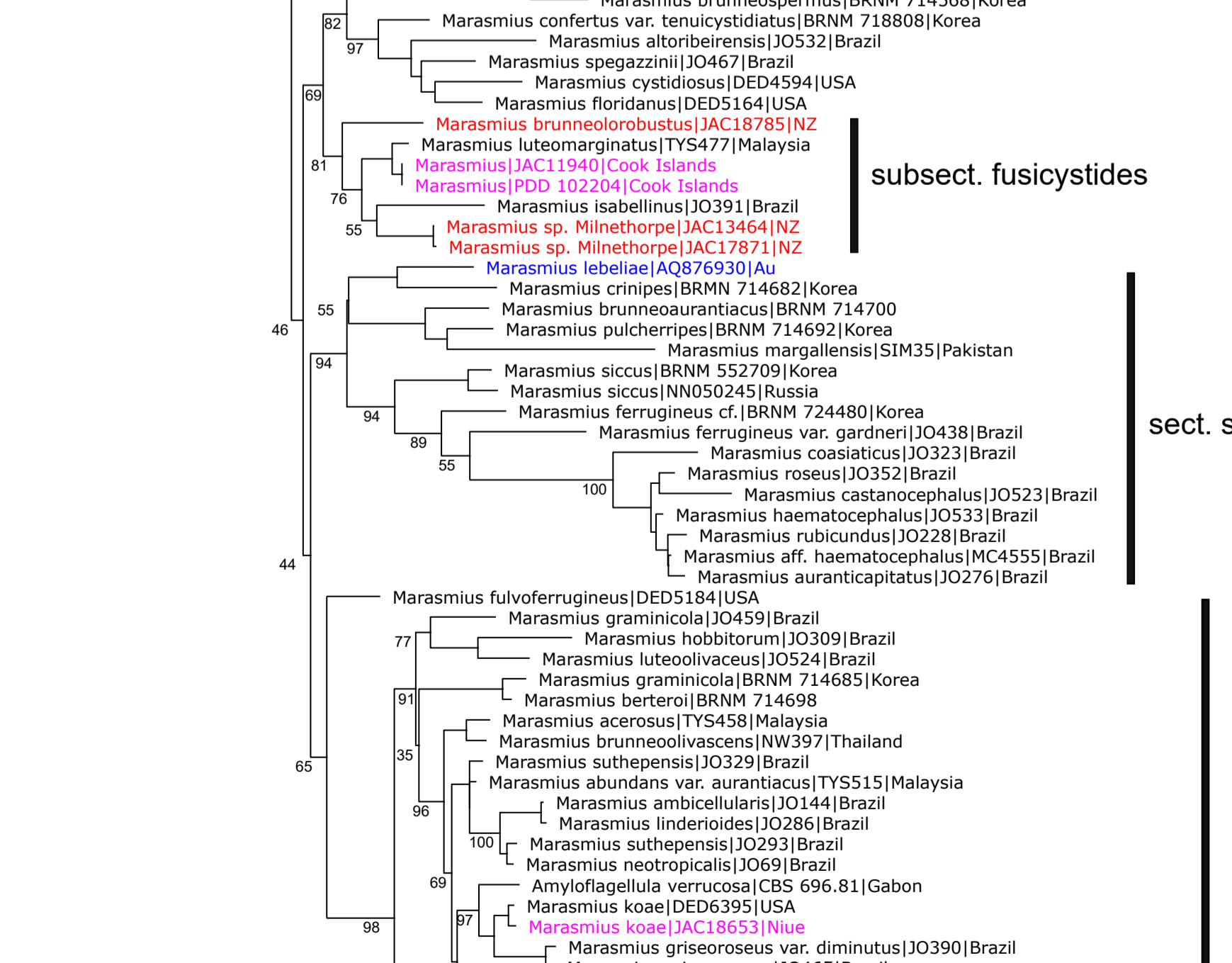
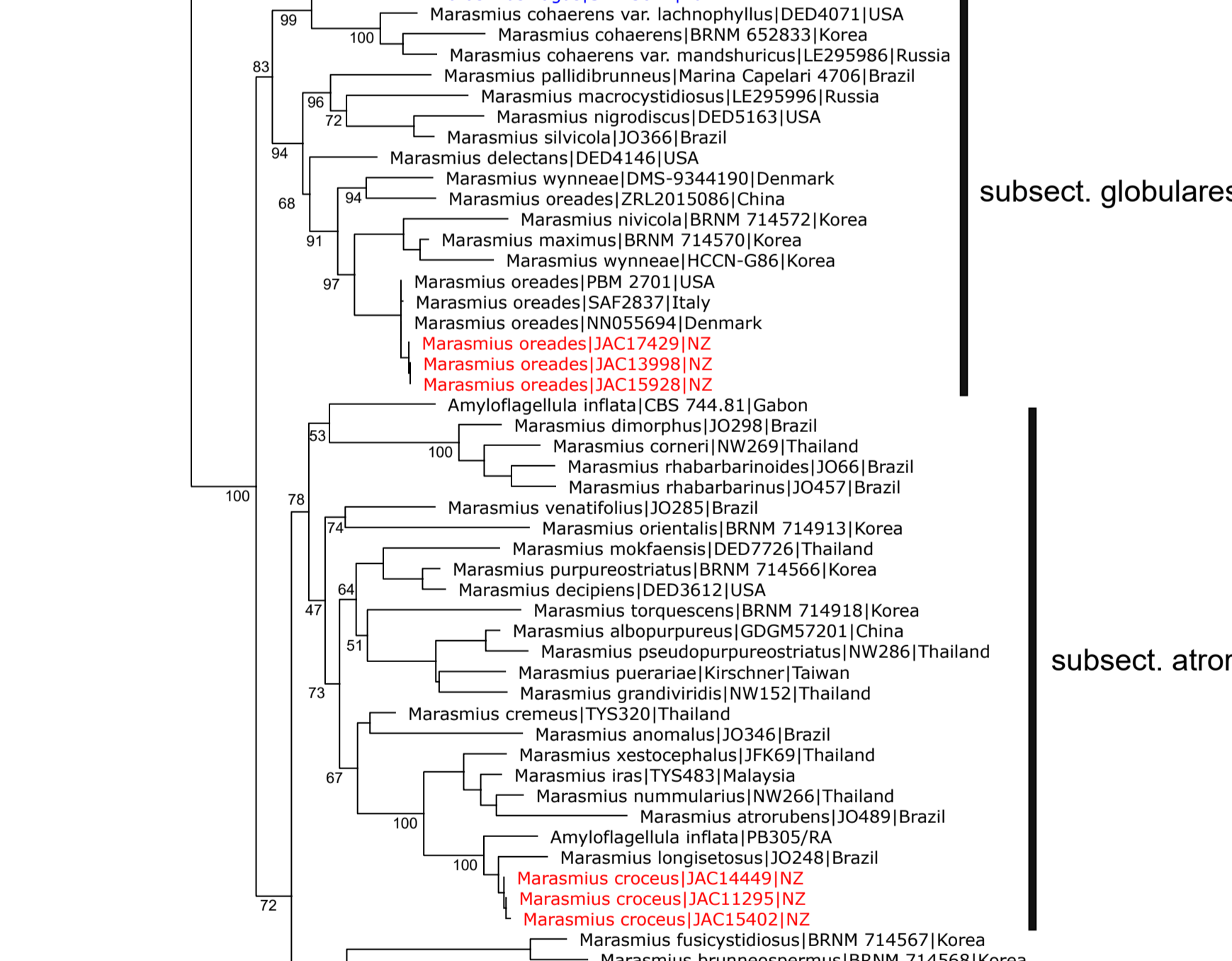
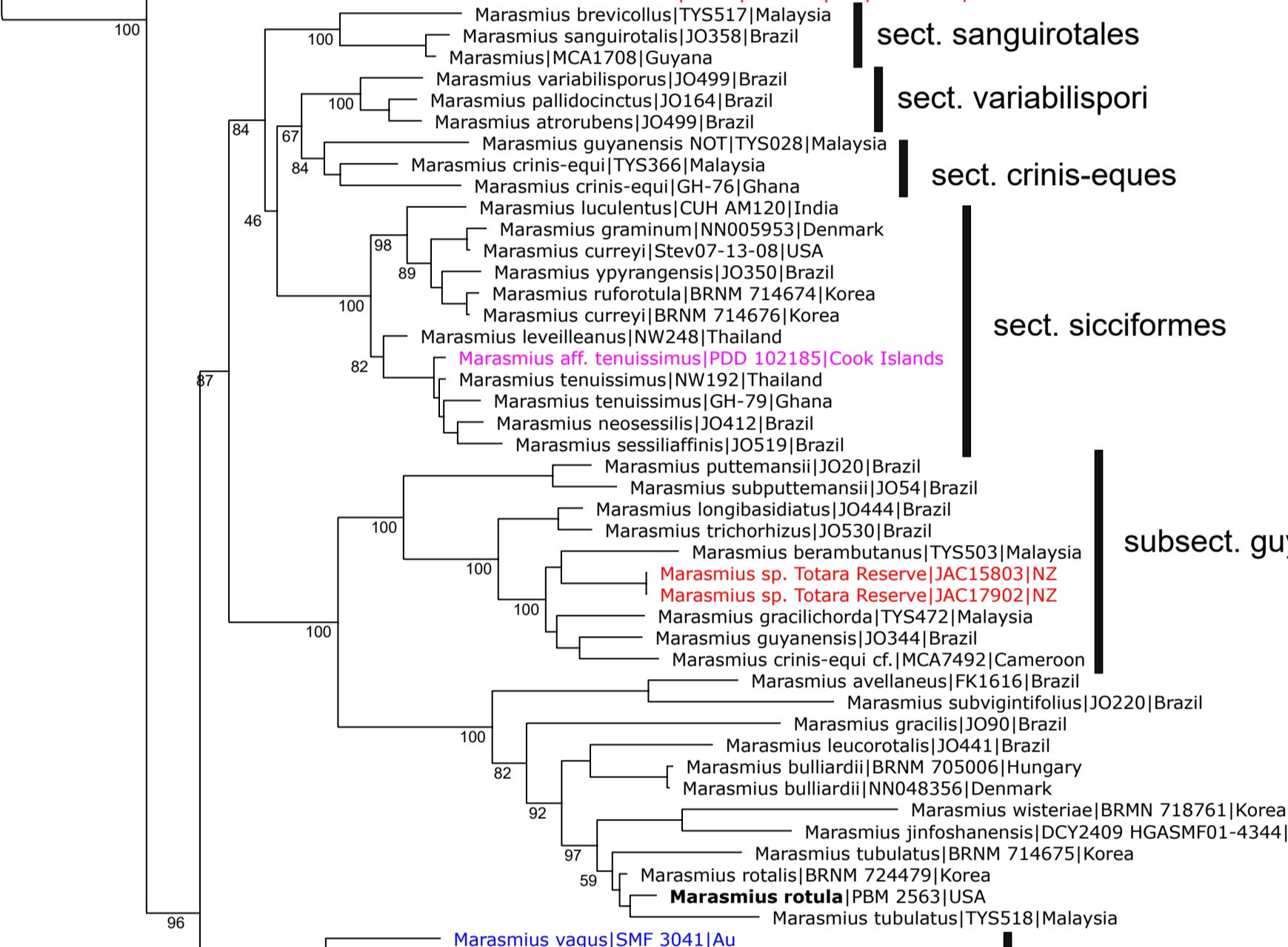
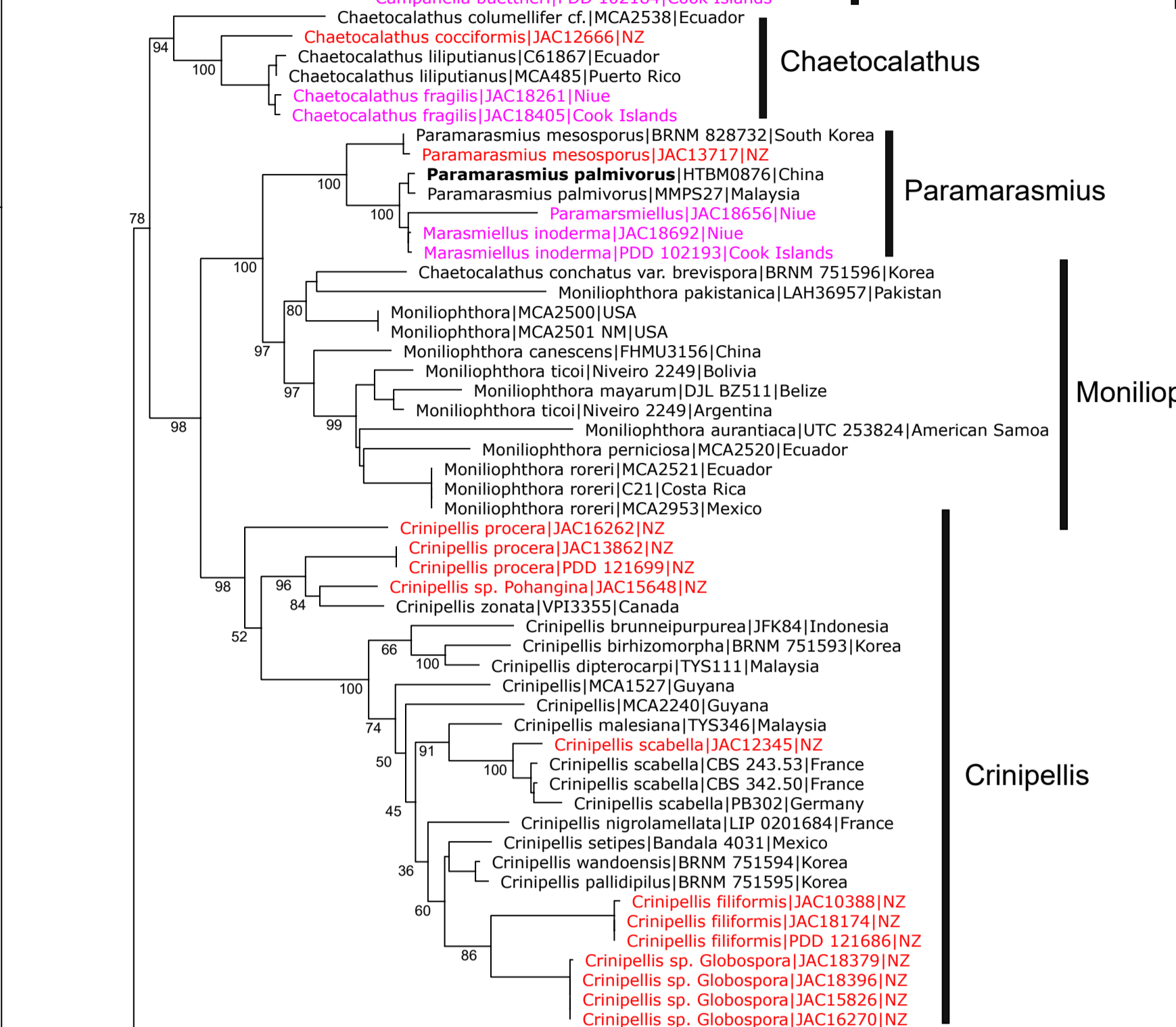


Marasmiaceae + Campanellaceae  
ITS + LSU + SSU + RPB2 + Tef  
Jerry Cooper, Apr. 2026



Campanellaceae

Chaetocalathus

Paramarasmius

Monilophthora

subfam. Crinipellieae

Crinipellis

sect. sanguirotales

sect. variabilispori

sect. crinis-eques

sect. siccifformes

subsect. guyanensis

sect. marasmius

subsect. globulares

subsect. atrorubentes

sect. globulares

subsect. fuscistoides

subg. Globulares

sect. sicci

subsect. leonini

Marasmiaceae

Chaetocalathus

Paramarasmius

Monilophthora

subfam. Crinipellieae

Crinipellis

sect. sanguirotales

sect. variabilispori

sect. crinis-eques

sect. siccifformes

subsect. guyanensis

sect. marasmius

subsect. globulares

subsect. atrorubentes

sect. globulares

subsect. fuscistoides

subg. Globulares

sect. sicci

subsect. leonini

Marasmiaceae

Chaetocalathus

Paramarasmius

Monilophthora

subfam. Crinipellieae

Crinipellis

sect. sanguirotales

sect. variabilispori

sect. crinis-eques

sect. siccifformes

subsect. guyanensis

sect. marasmius

subsect. globulares

subsect. atrorubentes

sect. globulares

subsect. fuscistoides

subg. Globulares

sect. sicci

subsect. leonini

Marasmiaceae